

PORT AUTHORITY

Port Authority® Women's C-FREE® Double Knit Full-Zip LK881

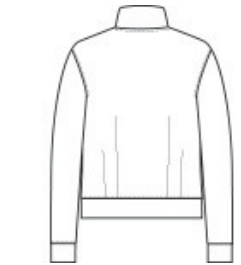


This mid weight full-zip will stand out in any work or leisure wardrobe. Not only is it easy-to-wear and layerable, but it also boasts superior stretch, snag-resistant, moisture-wicking and UV ray resistant performance.

- 7.7-ounce, 89% recycled polyester/11% spandex interlock knit (solids)
- 7.7-ounce, 81% recycled polyester/8% polyester/11% spandex interlock knit (heathers)
- Carbon footprint neutralized through the ClimeCo Certified Product™ Program
- Snag-resistant
- Moisture-wicking
- UPF rating of 50+
- Slight drop shoulder
- Dyed-to-match, recycled, molded zipper with dyed-to-match rubber-tipped pull
- Angled front pockets with stitching detail
- Self-banded cuffs and hem
- Pleats at back hem
- Tag-free label



front



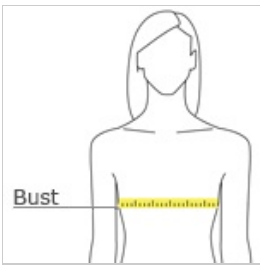
back

Due to the nature of 100% polyester performance fabrics, special care must be taken throughout the printing process.

CARE INSTRUCTIONS

Machine Wash Cold With Like Colors. Do Not Use Fabric Softener. Only Non-Chlorine Bleach When Needed. Tumble Dry Low. Remove Promptly. Cool Iron If Necessary.

HOW TO MEASURE



BUST

Measure under the arm and around the fullest part of the bust with arms down, keeping tape horizontal.

SIZE CHART

	XS	S	M	L	XL	XXL	3XL	4XL
Size	2	4/6	8/10	12/14	16/18	20/22	24/26	28/30
Bust	32-34	35-36	37-38	39-41	42-44	45-47	48-51	52-55

COLOR INFORMATION

Please note: PMS code information is shown only when an exact match is available.



Deep Black
PMS BLACK C



Grey Steel Heather
PMS 4287C



Smoke Grey



True Navy
PMS 533C